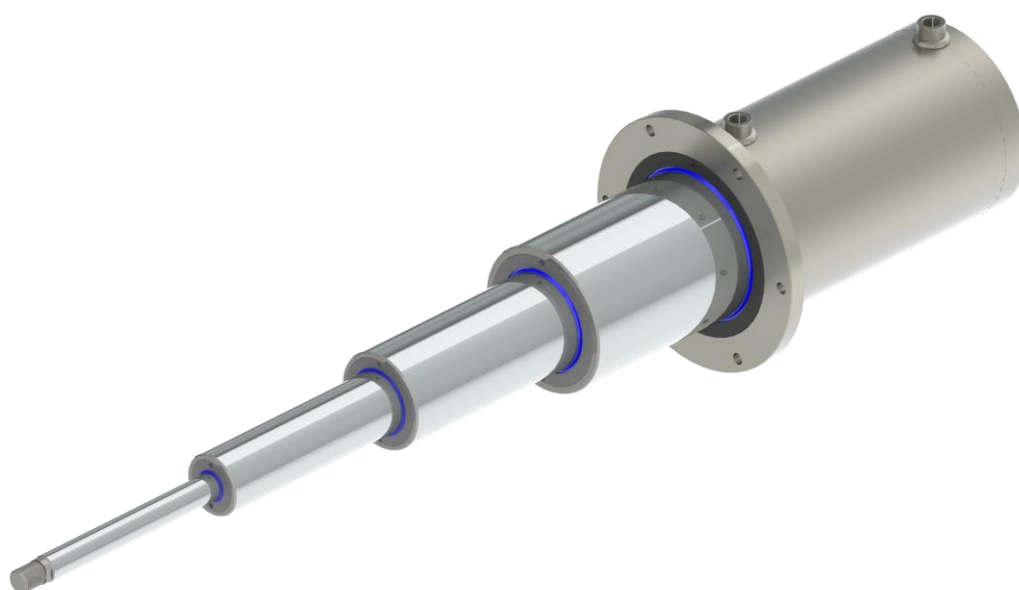


HIDROPNEUMATIKA DVORADNI TELESKOPSKI CILINDRI
HIDROPNEUMATIKA DOUBLE ACTING TELESCOPIC CYLINDER
HIDROPNEUMATIKA DOPPELTWIRKENDER TELESKOPZYLINDER

THCD200



Nazivni tlak	Nominal pressure	Nenndruck	200 bar
Ispitni tlak	Test pressure	Prüfdruck	260 bar
Max. hod	Max. stroke	Max. Hub	1000mm
φ klipa	Piston φ	Kolben φ	40-180 mm

Moguće su i druge izvedbe prema želji kupca, npr. drugi oblici, veći hodovi, itd.

Other designs are possible according to the customer's wishes, eg other shapes, larger strokes, etc.

Weitere Ausführungen wie z.B. andere Bauformen, größere Hübe, etc. nach Kundenwunsch möglich

Primjena:
Alati za rezanje
Izrada alata
Mobilna hidraulika

Application area:
Cutting tool
Tool manufacturing
Mobile hydraulics

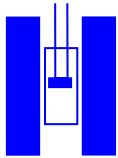
Einsatzgebiet:
Schneidwerkzeug
Werkzeugbau
Mobilhydraulik

Zadržavamo prava na izmjene

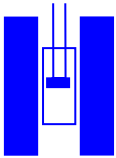
Subject to change without notice

Änderungen vorbehalten

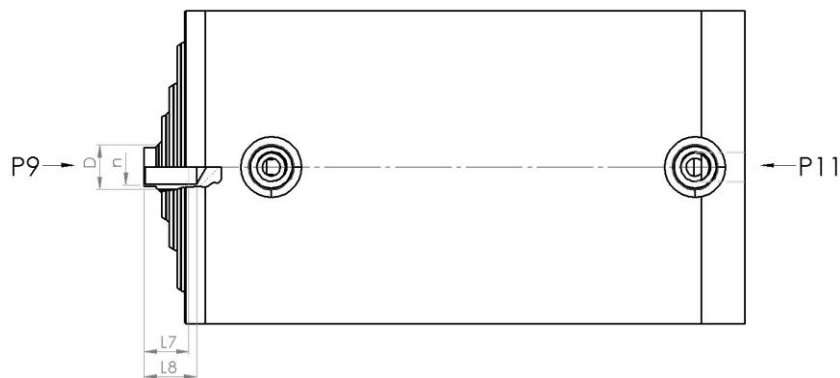
HIDROPNEUMATIKA d.o.o.



Opći opis i naputci	Description and Information	Beschreibung und Hinweise
Pogodan za male prostore i kratke hodove	Suitable for small spaces and short Strokes	Ausgezeichnet für kleine Einbauträume und kurze Hübe
Moguća izvedba sa prigušenjem i regulacijom – straga	Possible construction with damping and regulation - at the back	Optional mit regelbarer Endlagendämpfung hinten
Moguća izrada cilindra za temperature do +180 °C	Possible cylinder construction for temperatures to +180°C	Optional für Temperaturen bis +180°C
Ugrađene su brtve za hidrauličke tekućine H, HL, HLP prema njemačkoj normi DIN 51524/51525 i primjenjive su u temperaturnom rasponu od -20 °C do +90 °C	The installed seals are suitable for hydraulic fluids H, HL, HLP according to German Standard DIN 51524/51525 and to temperatures from -20 °C to +90 °C	Die eingebauten Dichtungen sind für Hydroflüssigkeiten H, HL, HLP nach DIN 51524/51525 und einem Temperaturbereich von -20 °C bis zu +90 °C geeignet
Klipnjača je brušena i tvrdo kromirana	Piston rods are ground and hard chromed	Kolbenstangen sind geschliffen und hartverchromt
Brtva za klipnjaču: PU	Piston rod seal: PU	Kolbenstangendichtung: PU
Brtva za klip: klizni prsten PTFE	Piston seal: PTFE - axial face seal	Kolbendichtung: Gleitring PTFE



	Posebna oprema	Special equipment	Sonderausstattungen
P1	Brtve iz VITON®-a odporne na temperature do 180°C te pogodne za rad s HDF pogonskim tekućinama.	VITON® seals are temperature resistant to 180°C and suitable for HDF drive fluids.	VITON® – Dichtungen hitzebeständig bis 180°C und geeignet für den Betrieb mit HDF Flüssigkeiten.
P5	Odzračni čepovi	Vent plugs	Entlüftungsschrauben
P6	Zaštita od korozije kemijskim niklanjem	Protection from corrosion with chemical - nickel plating	Korrosionsbeständige Ausführung durch chemisches Vernickeln
P7	Izvedba od nehrđajućeg čelika W.Nr. 1.4305	Construction from Stainless Steel W.Nr. 1.4305	Korrosionsbeständige Ausführung durch W.Nr. 1.4305
P8	Izvedba od čelika W.Nr. 1.4404 postojanog u morskoj vodi i otpornog na kiseline	Construction from Steel W.Nr 1.4404 stable in sea water and resistant to acid	Meerwasser-und säurebeständige Ausführung durch W.Nr. 1.4404
P9	Unutarnji navoj klipnjače	Piston rod internal thread	Kolbenstangeninnengewinde
P10	Vanjski navoj klipnjače na zahtjev kupca	Piston rod external thread at customer's request	Aussengewinde der Kolbenstange auf Kundenwunsch
P11	Aksijalni priključak na zahtjev kupca	Axial connection at customer's request	Axial-anschluss auf Kundenwunsch

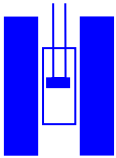


Klipnjača s unutarnjim navojem –standardne mjere Piston rod with internal thread – default values Kolbenstange mit Innengewinde - Standardwerte				
D	30	50	70	110
n	M24x1.5	M35x1.5	M45x1.5	M58x1.5
L7	30	35	50	60
L8	35	40	55	65

Zadržavamo prava na izmjene

Subject to change without notice

Änderungen vorbehalten

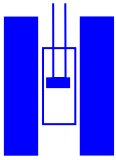


Načini rada/ Modes of operation/ Funktionsarten

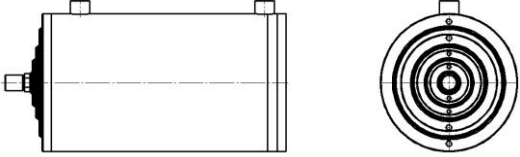
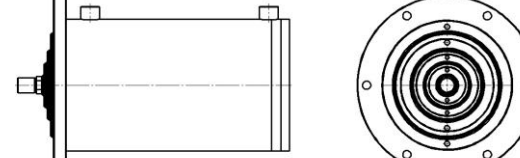
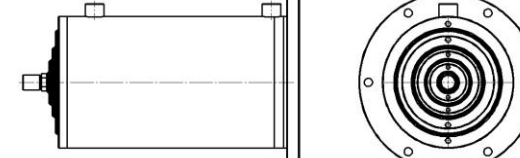
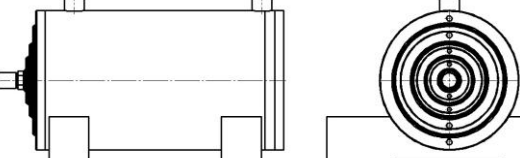
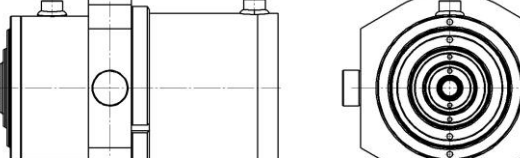
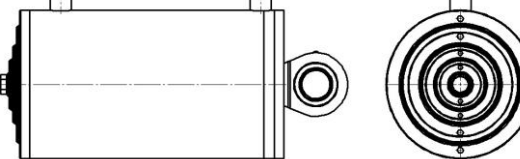
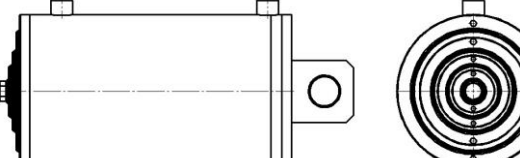
Simbol Symbol Sinnbild	Identifikacijski broj Identification number Identifikationsnummer	Opis	Description	Beschreibung
	D01	Dvoradni	Double-acting	Doppeltwirkend;
	D08	Dvoradni; prigušenje sa regulacijom - straga	Double-acting; damping with regulation - rear	Doppeltwirkend; Endlagendämpfu ng regelbar - hinten

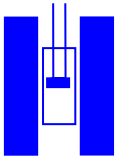
Tehnički podaci/ Technical data/ Technische Daten

	40	63	80	125	
Klip Ø Piston Ø Kolben Ø					
Klipnjača Ø Piston rod Ø Kolbenstangen Ø	30	50	70	110	
Površina klipa (tlačno) (A_T) cm ² Piston face (pushing) Kolbenfläche (stoßend)	12,57	31,17	50,27	122,65	
Površina klipa (vlačno) (A_V) cm ² Piston ring face (drawing action) Kolbenringfläche (ziehend)	5,49	11,53	11,77	27,67	
Sila (A_T) kN Force pushing Kraft drückend	100 bar 200 bar	11.93 23.86	29.6 59.19	47.73 95.46	116.53 233.04
Sila (A_V) kN Force pulling Kraft ziehend	100 bar 200 bar	5.23 10.44	10.95 21.91	11.19 22.37	26.29 52.58

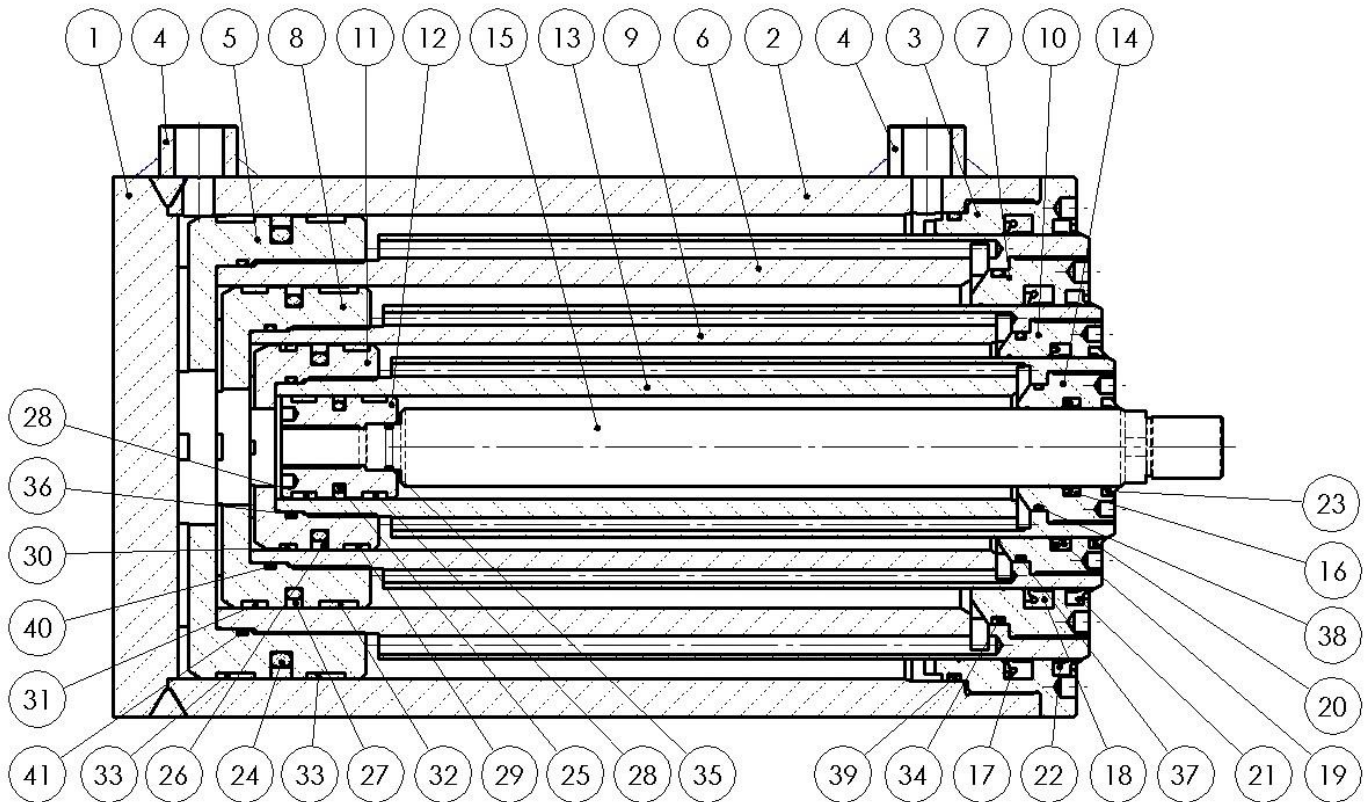


OBLICI IZRADE / DESIGNS / BAUFORMEN

Način učvršćenja cilindra Cylinder mounting types Zylinder-Befestigungsarten	Ident. broj Ident. Num	Opis Description Beschreibung	
	00	TEMELJNA IZVEDBA BASIC VERSION GRUNDAUSFÜHRUNG	
		03	UČVRŠĆENJE PRIRUBNICOM SPRIJEDA FRONT FLANGE FIXING FLANSCHBEFESTIGUNG - VORN
			04
	06	UČVRŠĆENJE NOGOM SPRIJEDA I STRAGA FRONT AND REAR FOOT FIXING FUSSBEFESTIGUNG VORN UND HINTEN	
		08	UČVRŠĆENJE OKRETNIM ČEPOVIMA U SREDINI FIXING WITH SWIVEL PLUGS IN THE MIDDLE SCHWENKZAPFENBEFESTIGUNG MITTE
	10		UČVRŠĆENJE RADIJALNIM PROVRTOM I KUGLASTIM ZGLOBOM STRAGA FIXING WITH RADIAL BORS AND BALL JOINT REAR SCHWENKAUGENBEFESTIGUNG MIT GELENKLAGER HINTEN
		11	UČVRŠĆENJE RADIJALNIM PROVRTOM I ZAKRETNIM LEŽAJEM STRAGA FIXING WITH RADIAL BORS AND SWIVEL BEARING REAR SCHWENKAUGENBEFESTIGUNG MIT SCHWENKBUCHSE HINTEN



POPIS DIJELOVA/ PARTS LIST/ LISTE DER TEILE

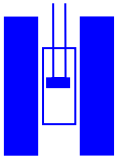


Poz./Pos.	Naziv/Name	Poz./Pos.	Naziv/Name
1	Dno/Cylinder bottom/Zylinderboden	22	Brisač/Wiper seal/Abstreifer
2	Cijev/Cylinder tube/ Zylinderrohr	23	Brisač/Wiper seal/Abstreifer
3	Glava/Cylinder head/Zylinderkopf	24	Klipna brtva/Piston seal/Kolbendichtung
4	Priključak/Connection/Anschluss	25	Klipna brtva/Piston seal/Kolbendichtung
5	Klip/Piston/Kolben	26	Klipna brtva/Piston seal/Kolbendichtung
6	Klipnjača/Piston tube/Kolbenrohr	27	Klipna brtva/Piston seal/Kolbendichtung
7	Glava/Cylinder head/Zylinderkopf	28	Traka za vođenje/Piston guide/Kolbenführung
8	Klip/Piston/Kolben	29	Traka za vođenje/Piston guide/Kolbenführung
9	Klipnjača/Piston tube/Kolbenrohr	30	Traka za vođenje/Piston guide/Kolbenführung
10	Glava/Cylinder head/Zylinderkopf	31	Traka za vođenje/Piston guide/Kolbenführung
11	Klip/Piston/Kolben	32	Traka za vođenje/Piston guide/Kolbenführung
12	Klip/Piston/Kolben	33	Traka za vođenje/Piston guide/Kolbenführung
13	Klipnjača/Piston tube/Kolbenrohr	34	O-prsten/O-ring
14	Glava/Cylinder head/Zylinderkopf	35	O-prsten/O-ring
15	Klipnjača/Piston rod/Kolbenstange	36	O-prsten/O-ring
16	Brtva klipnjače/Piston rod seal/Kolbenstangendichtung	37	O-prsten/O-ring
17	Brtva klipnjače/Piston rod seal/Kolbenstangendichtung	38	O-prsten/O-ring
18	Brtva klipnjače/Piston rod seal/Kolbenstangendichtung	39	O-prsten/O-ring
19	Brtva klipnjače/Piston rod seal/Kolbenstangendichtung	40	O-prsten/O-ring
20	Brisač/Wiper seal/Abstreifer	41	O-prsten/O-ring
21	Brisač/Wiper seal/Abstreifer		

Zadržavamo prava na izmjene

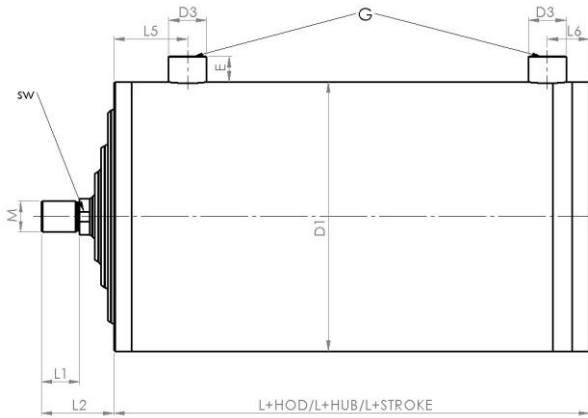
Subject to change without notice

Änderungen vorbehalten



HIDROPNEUMATIKA DVORADNI TELESKOPSKI CILINDRI
 HIDROPNEUMATIKA DOUBLE ACTING TELESCOPIC CYLINDER
 HIDROPNEUMATIKA DOPPELTWIRKENDER TELESKOPZYLINDER

THCD200



00



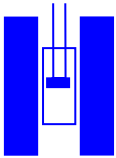
Segment 1 Stufe 1	Ø klipa Piston Ø Kolben Ø	40	40	40	63	80	80	125
	Ø klipnjače Piston rod Ø Stangen Ø	30	30	30	50	70	70	110
Segment 2 Stufe 2	Ø klipa Piston Ø Kolben Ø	80	80	80	145	125	125	180
	Ø klipnjače Piston rod Ø Stangen Ø	70	70	70	135	110	110	165
Segment 3 Stufe 3	Ø klipa Piston Ø Kolben Ø	125	125	-	-	180	-	-
	Ø klipnjače Piston rod Ø Stangen Ø	110	110	-	-	165	-	-
Segment 4 Stufe 4	Ø klipa Piston Ø Kolben Ø	180	-	-	-	-	-	-
	Ø klipnjače Piston rod Ø Stangen Ø	165	-	-	-	-	-	-
D1		210	150	105	170	210	150	210
D3		30	25	25	30	30	25	30
E		20	16	16	20	20	16	20
G		G 1/2"	G 3/8"	G 3/8"	G 1/2"	G 1/2"	G 3/8"	G 1/2"
L+HOD/STROKE/ HUB		157+HUB/4	170+HUB/3	180+HUB/2	180+HUB/2	170+HUB/3	180+HUB/2	170+HUB/2
L1		30	30	30	35	50	50	60
L2		57	52	47	52	75	72	77
L5		58	58	58	58	58	58	58
L6		33	33	33	33	33	33	33
M		M24x1.5	M24x1.5	M24x1.5	M35x1.5	M45x1.5	M45x1.5	M58x1.5
SW		24	24	24	41	55	55	95

Zadržavamo prava na izmjene

Subject to change without notice

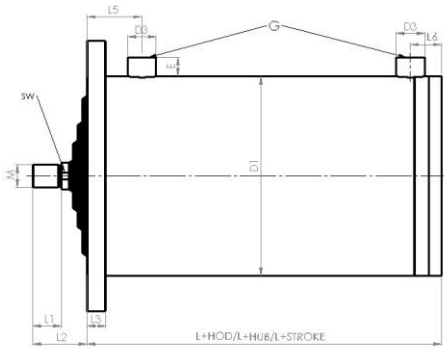
Änderungen vorbehalten

HIDROPNEUMATIKA d.o.o.

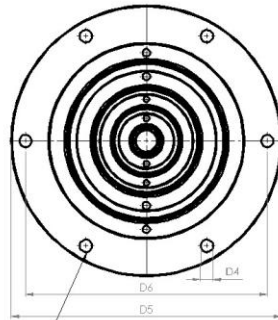


HIDROPNEUMATIKA DVORADNI TELESKOPSKI CILINDRI
 HIDROPNEUMATIKA DOUBLE ACTING TELESCOPIC CYLINDER
 HIDROPNEUMATIKA DOPPELTWIRKENDER TELESKOPZYLINDER

THCD200



P=BROJ PROVRTA
 P=ANZAHL DER BEFESTIGUNGSBOHRUNGEN
 P=NUMBER OF HOLES



03



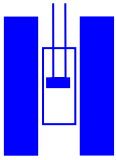
Segment 1 Stufe 1	Ø klipa Piston Ø Kolben Ø	40	40	40	63	80	80	125
	Ø klipnjače Piston rod Ø Stangen Ø	30	30	30	50	70	70	110
Segment 2 Stufe 2	Ø klipa Piston Ø Kolben Ø	80	80	80	145	125	125	180
	Ø klipnjače Piston rod Ø Stangen Ø	70	70	70	135	110	110	165
Segment 3 Stufe 3	Ø klipa Piston Ø Kolben Ø	125	125	-	-	180	-	-
	Ø klipnjače Piston rod Ø Stangen Ø	110	110	-	-	165	-	-
Segment 4 Stufe 4	Ø klipa Piston Ø Kolben Ø	180	-	-	-	-	-	-
	Ø klipnjače Piston rod Ø Stangen Ø	165	-	-	-	-	-	-
D1		210	150	105	170	210	150	210
D3		30	25	25	30	30	25	30
D4		13	11	11	13	13	11	13
D5		285	210	170	245	285	210	285
D6		255	185	145	215	255	185	255
E		20	16	16	20	20	16	20
G		G 1/2"	G 3/8"	G 3/8"	G 1/2"	G 1/2"	G 3/8"	G 1/2"
L+HOD/STROKE/ HUB		157+HUB/4	170+HUB/3	180+HUB/2	180+HUB/2	170+HUB/3	180+HUB/2	170+HUB/2
L1		30	30	30	35	50	50	60
L2		57	52	47	52	75	72	77
L3		20	20	20	20	20	20	25
L5		58	58	58	58	58	58	58
L6		33	33	33	33	33	33	33
M		M24x1.5	M24x1.5	M24x1.5	M35x1.5	M45x1.5	M45x1.5	M58x1.5
SW		24	24	24	41	55	55	95
P		6	6	4	6	6	6	8

Zadržavamo prava na izmjene

Subject to change without notice

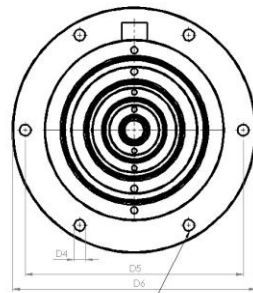
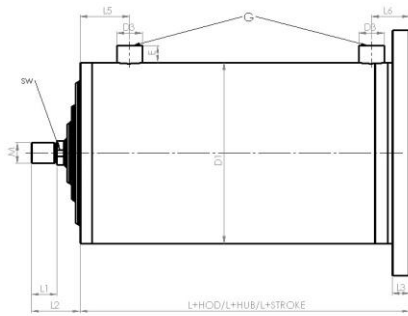
Änderungen vorbehalten

HIDROPNEUMATIKA d.o.o.



HIDROPNEUMATIKA DVORADNI TELESKOPSKI CILINDRI
 HIDROPNEUMATIKA DOUBLE ACTING TELESCOPIC CYLINDER
 HIDROPNEUMATIKA DOPPELTWIRKENDER TELESKOPZYLINDER

THCD200



P=BROJ PROVRTA
 P=ANZAHL DER BEFESTIGUNGSBOHRUNGEN
 P=NUMBER OF HOLES

04



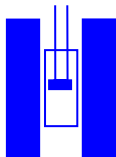
Segment 1 Stufe 1	Ø klipa Piston Ø Kolben Ø	40	40	40	63	80	80	125
	Ø klipnjače Piston rod Ø Stangen Ø	30	30	30	50	70	70	110
Segment 2 Stufe 2	Ø klipa Piston Ø Kolben Ø	80	80	80	145	125	125	180
	Ø klipnjače Piston rod Ø Stangen Ø	70	70	70	135	110	110	165
Segment 3 Stufe 3	Ø klipa Piston Ø Kolben Ø	125	125	-	-	180	-	-
	Ø klipnjače Piston rod Ø Stangen Ø	110	110	-	-	165	-	-
Segment 4 Stufe 4	Ø klipa Piston Ø Kolben Ø	180	-	-	-	-	-	-
	Ø klipnjače Piston rod Ø Stangen Ø	165	-	-	-	-	-	-
D1		210	150	105	170	210	150	210
D3		30	25	25	30	30	25	30
D4		13	11	11	13	13	11	13
D5		285	210	170	245	285	210	285
D6		255	185	145	215	255	185	255
E		20	16	16	20	20	16	20
G		G 1/2"	G 3/8"	G 3/8"	G 1/2"	G 1/2"	G 3/8"	G 1/2"
L+HOD/STROKE/ HUB		168+HUB/4	181+HUB/3	191+HUB/2	191+HUB/2	181+HUB/3	191+HUB/2	181+HUB/2
L1		30	30	30	35	50	50	60
L2		57	52	47	52	75	72	77
L3		20	20	20	20	20	20	25
L5		58	58	58	58	58	58	58
L6		33	33	33	33	33	33	33
M		M24x1.5	M24x1.5	M24x1.5	M35x1.5	M45x1.5	M45x1.5	M58x1.5
SW		24	24	24	41	55	55	95
P		6	6	4	6	6	6	8

Zadržavamo prava na izmjene

Subject to change without notice

Änderungen vorbehalten

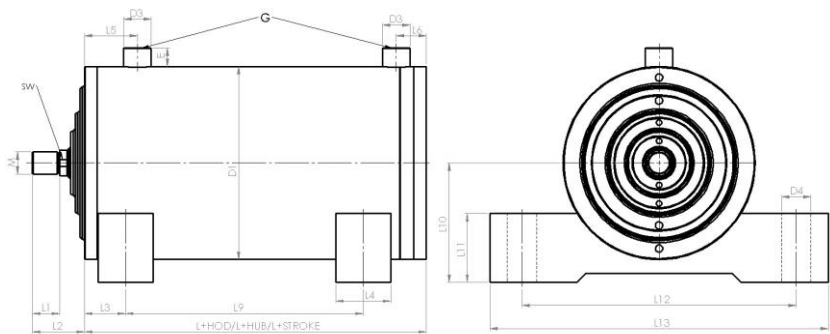
HIDROPNEUMATIKA d.o.o.



HIDROPNEUMATIKA DVORADNI TELESKOPSKI CILINDRI
 HIDROPNEUMATIKA DOUBLE ACTING TELESCOPIC CYLINDER
 HIDROPNEUMATIKA DOPPELTWIRKENDER TELESKOPZYLINDER

THCD200

06



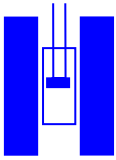
Segment 1 Stufe 1	Ø klipa Piston Ø Kolben Ø	40	40	40	63	80	80	125
	Ø klipnjače Piston rod Ø Stangen Ø	30	30	30	50	70	70	110
Segment 2 Stufe 2	Ø klipa Piston Ø Kolben Ø	80	80	80	145	125	125	180
	Ø klipnjače Piston rod Ø Stangen Ø	70	70	70	135	110	110	165
Segment 3 Stufe 3	Ø klipa Piston Ø Kolben Ø	125	125	-	-	180	-	-
	Ø klipnjače Piston rod Ø Stangen Ø	110	110	-	-	165	-	-
Segment 4 Stufe 4	Ø klipa Piston Ø Kolben Ø	180	-	-	-	-	-	-
	Ø klipnjače Piston rod Ø Stangen Ø	165	-	-	-	-	-	-
D1		210	150	105	170	210	150	210
D3		30	25	25	30	30	25	30
D4		32	25	17	25	32	25	32
E		20	16	16	20	20	16	20
G		G 1/2"	G 3/8"	G 3/8"	G 1/2"	G 1/2"	G 3/8"	G 1/2"
L+HOD/ STROKE/ HUB		157+HUB/4	170+HUB/3	180+HUB/2	180+HUB/2	170+HUB/3	180+HUB/2	170+HUB/2
L1		30	30	30	35	50	50	60
L2		57	52	47	52	75	72	77
L3		50	50	40	50	50	50	50
L4		60	60	40	60	60	60	60
L5		58	58	58	58	58	58	58
L6		33	33	33	33	33	33	33
L9min		100	100	80	100	100	100	100
L10		130	90	70	100	130	90	130
L11		75	60	40	60	75	60	75
L12		300	230	150	250	300	230	300
L13		370	280	190	300	370	280	370
M		M24x1.5	M24x1.5	M24x1.5	M35x1.5	M45x1.5	M45x1.5	M58x1.5
SW		24	24	24	41	55	55	95

Zadržavamo prava na izmjene

Subject to change without notice

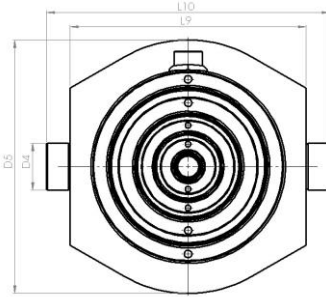
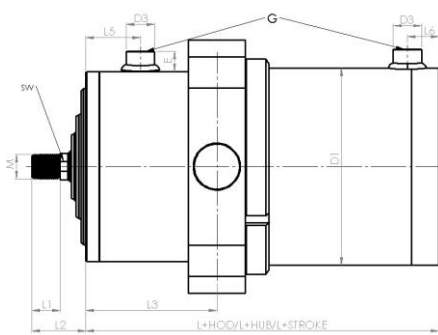
Änderungen vorbehalten

HIDROPNEUMATIKA d.o.o.



HIDROPNEUMATIKA DVORADNI TELESKOPSKI CILINDRI
 HIDROPNEUMATIKA DOUBLE ACTING TELESCOPIC CYLINDER
 HIDROPNEUMATIKA DOPPELTWIRKENDER TELESKOPZYLINDER

THCD200



08



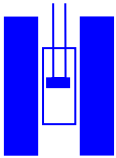
Segment 1 Stufe 1	Ø klipa Piston Ø Kolben Ø	40	40	40	63	80	80	125
	Ø klipnjače Piston rod Ø Stangen Ø	30	30	30	50	70	70	110
Segment 2 Stufe 2	Ø klipa Piston Ø Kolben Ø	80	80	80	145	125	125	180
	Ø klipnjače Piston rod Ø Stangen Ø	70	70	70	135	110	110	165
Segment 3 Stufe 3	Ø klipa Piston Ø Kolben Ø	125	125	-	-	180	-	-
	Ø klipnjače Piston rod Ø Stangen Ø	110	110	-	-	165	-	-
Segment 4 Stufe 4	Ø klipa Piston Ø Kolben Ø	180	-	-	-	-	-	-
	Ø klipnjače Piston rod Ø Stangen Ø	165	-	-	-	-	-	-
D1		210	150	105	170	210	150	210
D3		30	25	25	30	30	25	30
D4		50	40	30	50	50	40	50
D5		270	180	120	230	270	180	270
E		20	16	16	20	20	16	20
G		G 1/2"	G 3/8"	G 3/8"	G 1/2"	G 1/2"	G 3/8"	G 1/2"
L+HOD/STROKE/ HUB		157+HUB/4	170+HUB/3	180+HUB/2	180+HUB/2	170+HUB/3	180+HUB/2	170+HUB/2
L1		30	30	30	35	50	50	60
L2		57	52	47	52	75	72	77
L3min		125	110	105	125	130	110	125
L5		58	58	58	58	58	58	58
L6		33	33	33	33	33	33	33
L9		250	190	140	230	250	190	250
L10		300	250	180	300	300	250	330
M		M24x1.5	M24x1.5	M24x1.5	M35x1.5	M45x1.5	M45x1.5	M58x1.5
SW		24	24	24	41	55	55	95

Zadržavamo prava na izmjene

Subject to change without notice

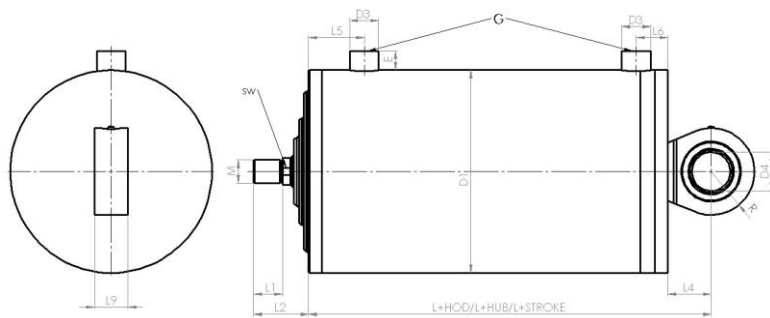
Änderungen vorbehalten

HIDROPNEUMATIKA d.o.o.

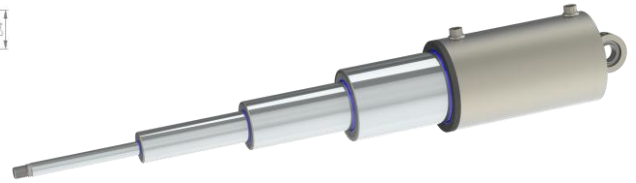


HIDROPNEUMATIKA DVORADNI TELESKOPSKI CILINDRI
 HIDROPNEUMATIKA DOUBLE ACTING TELESCOPIC CYLINDER
 HIDROPNEUMATIKA DOPPELTWIRKENDER TELESKOPZYLINDER

THCD200



10



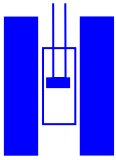
Segment 1 Stufe 1	Ø klipa Piston Ø Kolben Ø	40	40	40	63	80	80	125
	Ø klipnjače Piston rod Ø Stangen Ø	30	30	30	50	70	70	110
Segment 2 Stufe 2	Ø klipa Piston Ø Kolben Ø	80	80	80	145	125	125	180
	Ø klipnjače Piston rod Ø Stangen Ø	70	70	70	135	110	110	165
Segment 3 Stufe 3	Ø klipa Piston Ø Kolben Ø	125	125	-	-	180	-	-
	Ø klipnjače Piston rod Ø Stangen Ø	110	110	-	-	165	-	-
Segment 4 Stufe 4	Ø klipa Piston Ø Kolben Ø	180	-	-	-	-	-	-
	Ø klipnjače Piston rod Ø Stangen Ø	165	-	-	-	-	-	-
D1		210	150	105	170	210	150	210
D3		30	25	25	30	30	25	30
D4		40	40	30	40	50	50	60
E		20	16	16	20	20	16	20
G		G 1/2"	G 3/8"	G 3/8"	G 1/2"	G 1/2"	G 3/8"	G 1/2"
L+HOD/STROKE/ HUB		202+HUB/4	215+HUB/3	215+HUB/2	225+HUB/2	220+HUB/3	230+HUB/2	225+HUB/2
L1		30	30	30	35	50	50	60
L2		57	52	47	52	75	72	77
L3		85	85	65	85	90	90	110
L4		45	45	35	45	50	50	55
L5		58	58	58	58	58	58	58
L6		33	33	33	33	33	33	33
L9		50	50	30	50	50	50	50
L10		85	85	60	85	85	85	100
M		M24x1.5	M24x1.5	M24x1.5	M35x1.5	M45x1.5	M45x1.5	M58x1.5
SW		24	24	24	41	55	55	95

Zadržavamo prava na izmjene

Subject to change without notice

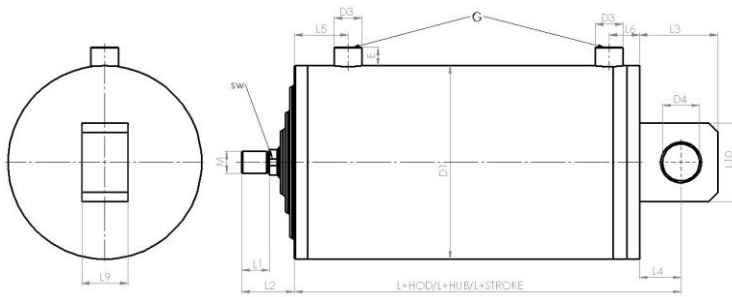
Änderungen vorbehalten

HIDROPNEUMATIKA d.o.o.

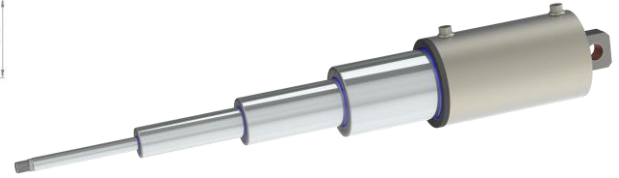


HIDROPNEUMATIKA DVORADNI TELESKOPSKI CILINDRI
 HIDROPNEUMATIKA DOUBLE ACTING TELESCOPIC CYLINDER
 HIDROPNEUMATIKA DOPPELTWIRKENDER TELESKOPZYLINDER

THCD200



11



Segment 1 Stufe 1	Ø klipa Piston Ø Kolben Ø	40	40	40	63	80	80	125
	Ø klipnjače Piston rod Ø Stangen Ø	30	30	30	50	70	70	110
Segment 2 Stufe 2	Ø klipa Piston Ø Kolben Ø	80	80	80	145	125	125	180
	Ø klipnjače Piston rod Ø Stangen Ø	70	70	70	135	110	110	165
Segment 3 Stufe 3	Ø klipa Piston Ø Kolben Ø	125	125	-	-	180	-	-
	Ø klipnjače Piston rod Ø Stangen Ø	110	110	-	-	165	-	-
Segment 4 Stufe 4	Ø klipa Piston Ø Kolben Ø	180	-	-	-	-	-	-
	Ø klipnjače Piston rod Ø Stangen Ø	165	-	-	-	-	-	-
D1		210	150	105	170	210	150	210
D3		30	25	25	30	30	25	30
D4		40	40	30	40	50	50	60
E		20	16	16	20	20	16	20
G		G 1/2"	G 3/8"	G 3/8"	G 1/2"	G 1/2"	G 3/8"	G 1/2"
L+HOD/STROKE/ HUB		236+HUB/4	249+HUB/3	231+HUB/2	239+HUB/2	258+HUB/3	268+HUB/2	267+HUB/2
L1		30	30	30	35	50	50	60
L2		57	52	47	52	75	72	77
L4		69	69	51	69	88	88	100
L5		58	58	58	58	58	58	58
L6		33	33	33	33	33	33	33
L9		35	35	30	35	40	40	50
M		M24x1.5	M24x1.5	M24x1.5	M35x1.5	M45x1.5	M45x1.5	M58x1.5
R		50	50	40	50	60	60	70
SW		24	24	24	41	55	55	95

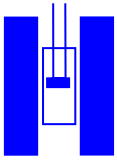
TELESKOPSKI CILINDRI FIRME HIDROPNEUMATIKA

Zadržavamo prava na izmjene

Subject to change without notice

Änderungen vorbehalten

HIDROPNEUMATIKA d.o.o.



HIDROPNEUMATIKA DVORADNI TELESKOPSKI CILINDRI
HIDROPNEUMATIKA DOUBLE ACTING TELESCOPIC CYLINDER
HIDROPNEUMATIKA DOPPELTWIRKENDER TELESKOPZYLINDER

THCD200

TELESCOPIC CYLINDERS FROM COMPANY HIDROPNEUMATIKA
TELESKOPZYLINDER VON DER FIRMA HIDROPNEUMATIKA



Zadržavamo prava na izmjene

Subject to change without notice

Änderungen vorbehalten

HIDROPNEUMATIKA d.o.o.